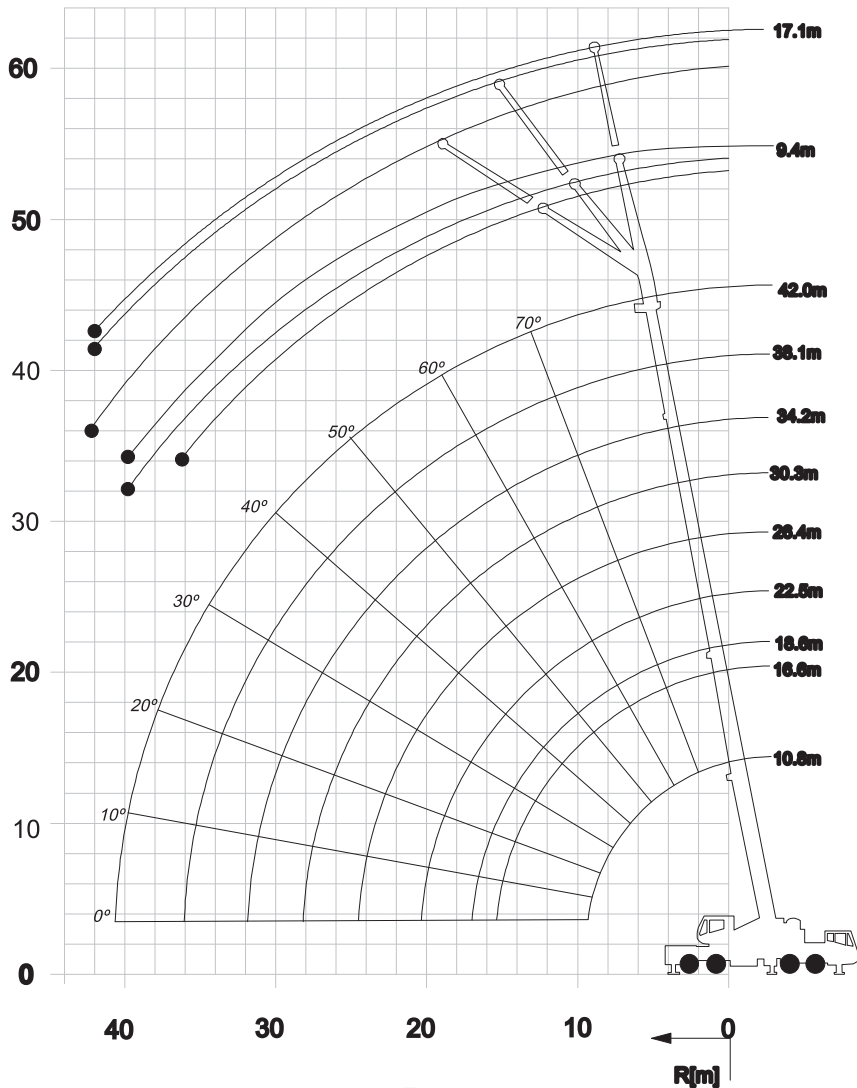


Operating Radius (m)	Total Rated Loads - Main Boom								
	Outriggers fully extended								
	Front jack extended (360°) / Front jack not extended (over sides and rear)								
	10.80m	16.60m	18.60m	22.50m	26.40m	30.30m	34.20m	38.10m	42.00m
2.50	70.00								
3.00	65.0	35.8	35.6	22.8					
3.50	51.2	35.8	35.1	24.4					
4.00	47.3	35.8	33.1	24.4	19.6				
4.50	43.9	35.8	31.3	23.2	19.6				
5.00	41.0	34.8	29.7	22.0	17.7	14.5			
6.00	35.5	32.3	26.9	20.0	16.0	14.5	14.4		
7.00	29.9	28.7	24.6	18.2	14.5	14.5	13.8	9.1	
8.00	22.6	25.0	22.6	16.8	13.2	14.5	13.3	9.1	8.5
9.00		21.3	21.2	15.5	12.1	13.8	12.5	8.7	8.3
10.00		17.6	17.8	13.8	10.4	12.6	11.5	8.3	8.1
12.00		12.6	12.7	11.4	8.7	10.6	9.8	8.0	7.7
14.00		6.5	9.7	9.4	7.3	8.9	8.4	7.3	7.3
16.00			7.5	7.4	5.7	7.5	7.1	6.9	6.9
18.00				5.8	4.4	6.1	6.0	6.0	6.1
20.00				4.3	3.4	4.8	5.3	5.2	5.4
22.00					2.6	3.8	4.2	4.5	4.7
24.00						3.0	3.4	3.8	4.1
26.00						2.3	2.7	3.1	3.5
28.00						1.8	2.3	2.6	3.0
30.00							1.9	2.1	2.5
32.00								1.7	2.0
34.00								1.3	1.7
36.00									1.3
38.00									1.0

Radius in metres	9.4m - 17.1m Folding Boom Extension With 8,165kg Counterweight Using 38.1m Main Boom					
	9.4m LENGTH			17.1m LENGTH		
	#0521 1.5° OFFSET	#0522 25° OFFSET	#0523 45° OFFSET	#0541 1.5° OFFSET	#0542 25° OFFSET	#0543 45° OFFSET
10	5,215 (79.5)					
12	5,215 (77.0)	4,535 (80.0)		3,150 (80.0)		
14	5,170 (74.5)	4,175 (78.0)	3,525 (80.0)	3,060 (78.5)		
16	4,880 (72.0)	3,890 (75.5)	3,050 (77.5)	2,965 (76.5)		
18	4,605 (69.5)	3,645 (73.0)	2,955 (75.0)	2,865 (74.0)	2,220 (80.0)	
20	4,350 (67.0)	3,455 (70.5)	2,920 (72.5)	2,765 (72.0)	2,135 (78.0)	1,675 (80.0)
22	4,105 (64.5)	3,290 (67.5)	2,895 (69.5)	2,670 (70.0)	2,035 (75.5)	1,660 (79.0)
24	3,870 (62.0)	3,155 (65.0)	2,880 (66.5)	2,575 (67.5)	1,935 (73.5)	1,605 (77.0)
26	3,560 (59.0)	3,055 (62.0)	2,875 (63.5)	2,465 (65.5)	1,830 (71.0)	1,565 (74.0)
28	3,025 (56.0)	2,960 (59.0)	2,870 (60.5)	2,360 (63.0)	1,740 (68.5)	1,530 (71.5)
30	2,485 (53.0)	2,685 (56.0)	2,865 (57.0)	2,275 (60.5)	1,690 (66.0)	1,500 (69.0)
32	2,025 (50.0)	2,180 (52.5)	2,390 (53.5)	2,180 (58.0)	1,625 (63.5)	1,470 (66.0)
34	1,625 (46.5)	1,740 (49.0)		2,065 (55.5)	1,565 (60.5)	1,440 (63.0)
36	1,275 (42.5)	1,350 (45.0)		1,760 (52.5)	1,505 (58.0)	1,415 (60.0)
38	960 (38.5)	1,010 (40.5)		1,435 (49.5)	1,455 (55.0)	1,395 (56.5)
40	685 (34.0)			1,150 (46.5)	1,370 (51.5)	
42				890 (43.5)	1,070 (48.5)	
44				655 (40.0)	800 (44.5)	
01.A(kg)	450	430	410	415	395	370
No Load Stability Data						
Min Boom(°)	24	25	45	35	37	45
Max Boom(m)		34.2			30.3	



www.pollockcranes.co.nz

p 07 574 2951